



**PRODUCT INFORMATION:** Indure was TorZo's first surface product line. It has the appearance of sleek concrete and has a simple, yet elegant appearance.

**SUSTAINABLE:** Made from FSC certified composite wood fiber material, Indure is an excellent fit for any green building project. Since Indure is a NAUF material and contains such a high amount of recycled material, when used in a green building project it can contribute to the project's LEED certification.

**DURABLE:** At the heart of the Indure line of surfaces is an acrylic resin. This resin not only gives Indure an elegant, concrete-like beauty, but it also gives it a hardness coefficient twice that of most hardwoods. Since Indure is incredibly hard, it is the ideal material for high wear applications such as tabletops, countertops, vanities and furniture.

**DISTINCT STYLING:** Indure has a stylish, sleek contemporary look that makes it an excellent choice for many commercial and residential environments. Indure comes in four elegant colors: onyx, cocoa, copper and natural.

**DESIGN FLEXIBILITY:** Indure's style, ease of fabrication, durability and elegant colors make it the perfect sustainable surface material for both horizontal and vertical projects.

## IDEAL FOR:

- Furniture
- Vanities
- Tabletops
- Countertops
- Flooring

## KEY FEATURES:

- Durable
- Easy to fabricate
- Higher stain resistance than concrete

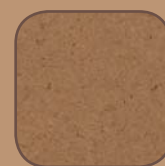
## AVAILABLE IN:



Cocoa



Copper



Natural



Onyx

**INDURE** is made from acrylic infused, FSC certified wood fiber material. TorZo's infusion process allows Indure to be cut, fabricated and machined with standard tooling. After the infusion process, Indure is still 65% wood fiber material. It is the perfect product for horizontal and vertical applications.

## ■ DIMENSIONS:

### BOARD SIZE:

- 3' x 10'

### THICKNESS:

- 3/8"
- 1/2"
- 3/4"\*

\*custom order only

### SHEET WEIGHT:

- 3' x 10' x 3/8" = 75 lbs
- 3' x 10' x 1/2" = 95 lbs
- 3' x 10' x 3/4" = 145 lbs\*

\*custom order only

### DENSITY:

- 78 lbs/ft<sup>3</sup>

## ■ ENVIRONMENTAL LEED CREDITS:

- I.E.Q. 4.4
- M.R. 4, 5\*, 7

\*applies to projects that are within a 500 mile radius of TorZo's manufacturing facility in Woodburn, Oregon (ZIP code 97071).

## ■ COLORS:

## ■ MATERIAL PROPERTIES:

PROPERTY	INDURE	UNITS
Thickness	1/2	inches
Density	78	lbs/ft <sup>3</sup>
Internal Bond	887	lbs/in <sup>2</sup>
Modulus of Rupture	8,300	lbs/in <sup>2</sup>
Modulus of Elasticity	737,000	lbs/in <sup>2</sup>
Hardness – Janka Ball	7,792	lbs, Janka Ball
Screw Holding Face	843	lbs required to pull 1" #10 sheet metal screw
Screw Holding Edge	952	lbs required to pull 1" #10 sheet metal screw
Linear Expansion	0.07	% dimensional change in length and width due to humidity change from 50% – 80% RH
Moisture Content	4	%, oven-dry basis
Fire Rating	C	Class

## ■ FABRICATION:

It is important to note that each sheet of Indure will have color and mottling variations from board to board and across a single board. These variations are sometimes difficult to see on the uncoated material, but this variation is normal and reinforces the natural properties of the Indure material.

Indure can be cut using standard carbon tip blades. Avoid feeding the material too fast to prevent binding or too slow to prevent burning.

Indure can be routed using standard carbide router tips. Material can be hand routed or routed on a CNC machine. Also, a mitered drop edge technique can be applied to give the appearance of thicker material.

The Indure material comes pre-sanded to 220 grit. In order to ensure a smooth, clean surface before a coating is applied, TorZo recommends the material be sanded with a random orbital sander to a 400 grit finish and then wiped down with a damp cloth, after fabrication. This will fully eliminate any sanding marks from the belt sanding process.

Titebond II® can be used for gluing Indure. For V-groove applications, a two-part solid surface epoxy system that best matches Indure's color, or a clear epoxy, is recommended.

For more in depth fabrication information, please see the TorZo Fabrication Guide and Edge Fabrication Guide, which are available from TorZo distributors.

Cocoa

Copper

Natural

Onyx