



PRODUCT INFORMATION: Orient™ is TorZo's most flexible line of surface material with a modern or old world look. This versatility allows Orient to be used in a variety of applications: horizontal, vertical and even flooring are ideal uses for Orient.

SUSTAINABLE: Made from SFI certified, NAUF wood chip material, Orient is an excellent fit for any green building project. When Orient is used in green building projects, it can contribute to the project's LEED certification.

DURABLE: At the heart of the Orient line of surfaces is an acrylic resin. This resin allows Orient to have a hardness coefficient twice that of most hardwoods. Orient's hardness is what makes it ideal for high wear sustainable surface applications.

DISTINCT STYLING: Depending on the environment Orient is used in, it can provide a sleek, modern look or a more rustic, old age look. This styling flexibility is what separates the Orient line of surface materials from its competitors. Orient is available in four standard colors: natural, copper, onyx and cocoa. It is also available in four custom colors: sapphire, turquoise, ruby and amethyst.

DESIGN FLEXIBILITY: Orient's ability to cater to different styles, ease of fabrication, durability and color options make this sustainable surface material the ideal choice for any project.

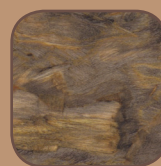
IDEAL FOR:

- Furniture
- Tabletops
- Countertops
- Vanities

KEY FEATURES:

- Twice the hardness coefficient of most hardwoods
- Durable
- Easy to fabricate
- Varying styles

AVAILABLE IN:



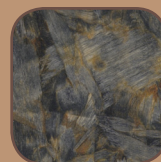
Cocoa



Copper



Natural



Onyx

ORIENT™ is made from acrylic infused, SFI certified and NAUF wood chip material. TorZo's infusion process allows Orient to be cut, fabricated and machined with standard tooling. After the infusion process, Orient is still 50% wood chip material. It is the perfect product for horizontal and vertical applications.

■ DIMENSIONS:

BOARD SIZE:

- 3' x 8'

THICKNESS:

- 1/2"
- 3/8"
- 3/4"*

*custom order only

SHEET WEIGHT:

- 3' x 8' x 1/2" = 75 lbs

DENSITY:

- 72 lbs/ft³

■ ENVIRONMENTAL LEED CREDITS:

- I.E.Q. 4.4
- M.R. 4, 5*

*applies to projects that are within a 500 mile radius of TorZo's manufacturing facility in Woodburn, Oregon (ZIP code 97071).

■ CUSTOM COLORS:

■ MATERIAL PROPERTIES:

PROPERTY	ORIENT	UNITS
Thickness	1/2	inches
Density	72	lbs/ft ³
Internal Bond	498	lbs/in ²
Modulus of Rupture	8,823	lbs/in ²
Modulus of Elasticity	1,281,514	lbs/in ²
Hardness – Janka Ball	4,589	lbs, Janka Ball
Screw Holding Face	751	lbs required to pull 1" #10 sheet metal screw
Screw Holding Edge	729	lbs required to pull 1" #10 sheet metal screw
Linear Expansion	0.07	% dimensional change in length and width due to humidity change from 50% – 80% RH
Moisture Content	2	%, oven-dry basis
Fire Rating	C	Class

■ FABRICATION:

Orient can be cut using standard carbon tip blades. Avoid feeding the material too fast to prevent binding or too slow to prevent burning.

Orient can be routed using standard carbide router tips. Material can be hand routed or routed on a CNC machine. Also, a mitered drop edge technique can be applied to give the appearance of thicker material.

The Orient material comes pre-sanded to 220 grit. In order to ensure a smooth, clean surface before a coating is applied, TorZo recommends the material be sanded with a random orbital sander to a 400 grit finish and then wiped down with a damp cloth, after fabrication.

Care should be taken to not over sand the material. Doing so will sand off the acrylic UV material used to fill voids in the board's surface and result in surface cratering. Once this occurs, the only way to eliminate these craters is to apply clear epoxy filler.

Either Titebond II® wood adhesive or a two-part solid surface epoxy can be used for gluing Orient. For seaming and miter edge applications, a two-part solid surface epoxy system that best matches Orient's color, or a clear epoxy, is recommended.

For more in depth fabrication information, please see the TorZo Fabrication Guide and Edge Fabrication Guide, which are available from TorZo distributors.

Amethyst

Ruby

Sapphire

Turquoise