

# BALSA FUSION

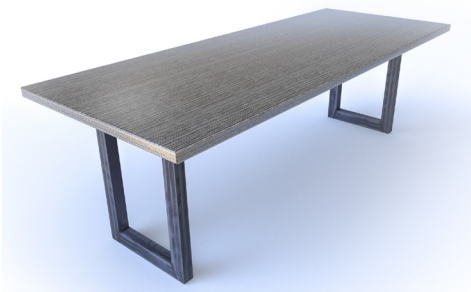


## THE BALSA FUSION STORY

Balsa Fusion is TorZo's latest addition to its line of sustainable surfacing materials. Nature provided the balsa tree with its unique lightness and structure, and our proprietary acrylic infusion and dye process enhances and elevates this already beautiful material. Using 100% FSC Certified balsa wood as a substrate, TorZo® infuses each panel to produce new levels of depth and warmth for interior spaces. Balsa Fusion expands the potential of color and texture applications while retaining the desirable characteristics of both durability and sustainability. Perfectly suitable in high traffic and demanding installations, Balsa Fusion can be tailored for nearly any interior application.

## PANORAMIC ELEGANCE

Balsa Fusion panels can be used in applications where all edges and surfaces are exposed illuminating its beauty from every angle. Balsa Fusion is offered in 36" x 96" x 1/4" and 36" x 96" x 5/8" (1/2" baltic birch).



## KEY FEATURES

- 100% Balsa tree lumber
- Superb sound and thermal insulation properties
- Layering technology creates attractive linear aesthetic
- Easily fabricated
- Available in 8 colors
- Sustainably grown from certified, rapidly-renewable plantations

## IDEAL FOR

- Wall paneling
- Casework
- Furniture
- Tabletops
- Horizontal surfaces
- Retail store fixtures

# BALSA FUSION

## FABRICATION

Balsa Fusion panels require the same fabrication equipment, techniques and products as typical wood substrates. No unique technology is required.

## SURFACES

All Balsa Fusion panels are made from layered Balsa Tree veneers and may show slight color and grain pattern variation. Panel faces may include small voids naturally occurring in raw material which can be filled with stainable wood filler if desired.

## HANDLING

Store Balsa Fusion panels in climate-controlled conditions on flat, level surface with adequate support.

## MACHINING AND FASTENING

Balsa Fusion panels are worked using standard fabricating techniques applicable for plywood panel products and will accept standard fasteners and wood adhesives. Care should be taken when cutting and machining Balsa, as the edges can splinter similar to vertical grain fir lumber. TorZo® recommends a minimum of 3/16" round over on all exposed edges for best results.

## FINISHING

Standard wood stains and finishes can be used on Balsa Fusion panels. Follow finish manufacturer's instructions for best results. TorZo recommends applying a heavy and durable finish especially for horizontal applications.

For in-depth fabrication information, please see the TorZo Fabrication Guide at [torzosurfaces.com](http://torzosurfaces.com).

## SPECS

PROPERTY	BALSA FUSION	UNITS
Thickness	11/16	inches
Density	34	lbs/ft <sup>3</sup>
Internal Bond	161	lbs/ft <sup>2</sup>
Modulus of Rupture	4,684	lbs/ft <sup>2</sup>
Modulus of Elasticity	523,569	lbs/ft <sup>2</sup>
Janka Hardness	648	lbs
Screw Holding Face	426	lbs required to pull 1" #10 sheet metal screw
Screw Holding Edge	373	lbs required to pull 1" #10 sheet metal screw
Moisture Content	5.8	%, oven dry basis
Fire Rating	C	ASTM E84 (*can be A with proper coating)

Balsa is manufactured exclusively for TorZo Sustainable Surfaces by 3A Composites Architectural Products.

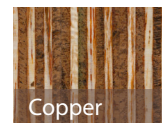
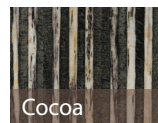
© 2016 TorZo® Sustainable Surfaces. This information is furnished without warranty, expressed or implied, except that it is accurate to the best knowledge of TorZo Sustainable Surfaces. All data including physical properties are based on averages of normal production of most common thickness. Any data provided on this sheet relates to the specific materials designated herein and is subject to change without notice. TorZo Sustainable Surfaces assumes no legal responsibility for the use of reliance upon this data.

## COLOR

Balsa is offered in a natural wood tone and can be custom stained and finished in a variety of color/gloss combinations.

## AVAILABLE COLORS

### STANDARD



### PREMIUM

