



the RayFleck story

Exceptional surface quality meets durability in RayFleck, the new sustainable material from TorZo® Surfaces.

Beech hardwood offers superior strength and surface quality, and TorZo's new RayFleck-infused beech is unlike any other surface material in the world. Formed with new layering and processing technology, panels of beech sourced from sustainable forests in central Europe are transformed by TorZo into a unique and stylish material for furniture design, interior finishes, wall-cladding, and many other horizontal and vertical applications.

RayFleck is named for the small, naturally occurring wood cells that become visible only after being infused with TorZo ultra-durable acrylic resin.

RayFleck is available in 8 designer colors, including Natural.

sustainability

- SFI-certified European beech
- No added urea formaldehyde
- Certified low VOC performance

key features

- Layering technology creates attractive linear aesthetic
- Proven durability
- Easily fabricated
- Available in 8 colors

ideal for

- Wall paneling
- Casework
- Restaurant tabletops and bartops
- Retail store fixtures
- Furniture



Mindful MATERIALS is a program fostering communication and transparency among industry professionals and manufacturers.



specs

PROPERTY	RayFleck (INFUSED)
Thickness	5/8 inches
Width	36 inches
Length	96 inches
Density	52 lbs per cubic foot
Internal bond	342 lbs per square foot
Modulus of rupture	15,494 lbs per square foot
Hardness – Janka ball	1,871 lbs
Screw holding face	608 lbs required to pull 1" #10 sheet metal screw
Screw holding edge	455 lbs required to pull 1" #10 sheet metal screw
Linear expansion	0.08% dimensional change in length and width due to humidity change from 50-80% relative humidity
Moisture content	5.5 percent, oven dry basis
Fire rating	C* ASTM E84 (*can be A or B with proper coating)

surfaces

All RayFleck panels are made from layered European beech veneers and may show slight color and grain pattern variation. Top panel faces are filled with stainable wood filler to eliminate naturally occurring voids.

RayFleck panels are machine sanded to 220 grit, with edges squared to 90 degrees.

handling

Store RayFleck panels in climate controlled conditions on a flat, level surface with adequate support.

fabrication

RayFleck panels require the same fabrication equipment, techniques and products as typical wood substrates. No unique technology is required.

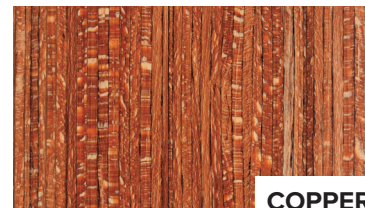
machining and fastening

RayFleck panels are worked using standard fabricating techniques applicable for plywood panel products and will accept standard fasteners and wood adhesives. Care should be taken when cutting and machining RayFleck as the edges can splinter similar to vertical-grain fir lumber. TorZo recommends a minimum of 3/16" round over on all exposed edges for best results.

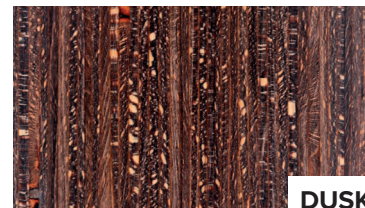
finishing

All RayFleck panels are shipped from the factory unfinished, unless otherwise indicated. As a part of the fabrication process, each panel requires a clear finishing top-coat, which is typically polyurethane, conversion varnish, lacquer or other approved product.

For in-depth fabrication information, please see the TorZo Fabrication Guide at torzosurfaces.com.



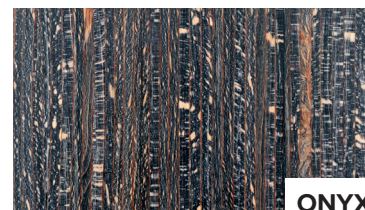
COPPER



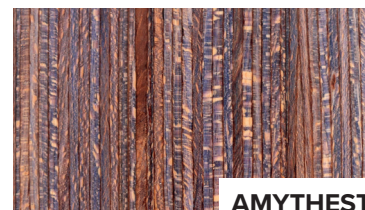
DUSK



NATURAL



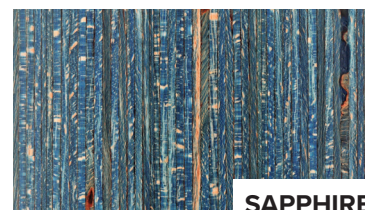
ONYX



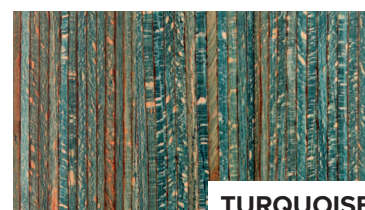
AMYTHEST



RUBY



SAPPHIRE



TURQUOISE

LEED contributing

- Indoor environmental quality
- No added urea formaldehyde (IEQ4.4)
- Low emitting materials (IEQ4.3)
- Wall elements (IEQ4.6)
- Materials & Resources: Regional materials (MR 5)
- Innovation & Design: Voluntary use of low emitting materials (10.1)